

io•teso

I/O Expansion Modules

The io•teso I/O Expansion Modules are a flexible way to increase the I/O density of the pro•teso range of Programmable Controllers. The I/O expansion modules offer a range of alternate types and configurations such as:

- 8 channel analogue input 0-10V/0-20ma,
- 4 channel analogue output 0-10V/0-20ma,
- 8 channel digital inputs; and
- 8 channel digital outputs.



The io•teso I/O Expansion Modules connect to the programmable controller via the multi-drop RS485 network. Each module has a unique identifier to permit as many as 16 I/O modules to reside on the one RS485 expansion network.

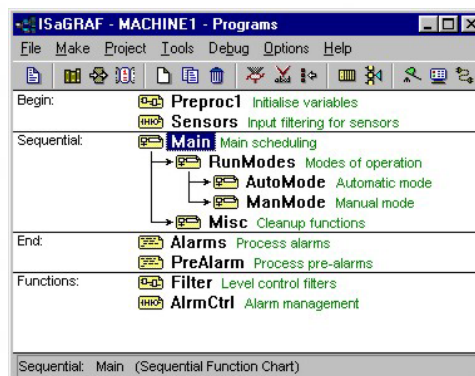
Alternatively, the io•teso I/O Expansion Modules can interface to all third party Modbus master devices as standard remote I/O.

PROGRAMMABILITY

The io•teso I/O Expansion Modules connect to any of the PC1 Series Programmable Controllers which can execute all five of the IEC61131-3 programming languages via the ISaGRAF V3.50 Workbench (available separately).

The IEC61131-3 languages include:

- Sequential Function Chart (SFC)
- Function Block Diagram (FBD)
- Ladder Diagram (LD)
- Structured Text (ST)
- Instruction List (IL)



io•teso

Contact us:

Unit 13
82 Reserve Road
Artarmon NSW 2064
Australia
Tel: + 61 2 9966 9424
Fax: + 61 2 9966 9429

Description	IO1000	IO1100	IO1200	IO1300
Input Voltage	+18 to +32 VDC (Nominal 24 VDC at 250mA)			
Environmental	Operational -40°C to +70°C 5% to 95% Relative Humidity			
Digital Inputs	Eight (8) - Configurable as pull up to 24V or pull down to 0V	None		
Digital Outputs	None	Eight (8) - Each output can sink 1A at 24VDC	None	
Analogue Inputs	None		Eight (8) - 12-bit 0 to +10 VDC or 0 – 20mA NTC Thermistor 2K	None
Analogue Outputs	None			Four (4) -10-bit 0 to +10 VDC or 0 – 20mA
Serial Communications	One (1) x 2-wire RS-485 port via plug/socket connector			
Protocols	Modbus RTU Serial (Slave)			
Enclosure	Anodised Aluminium			
Size	158mm x 85mm x 37mm			
Terminations	Plug / socket cage clamp connectors - V0 flammability rating - Cage clamping range maximum 1.5mm ² machine tool (MTW)			
Compliance	EN50155:1996 – Compliance with Visual Inspection, Performance Test, Cooling Test, Dry Test, Supply Related Surge and Transient Susceptibility Test, Transient Burst Susceptibility Test and Vibration, Shock and Bump Test.			
EMC Testing	Fast Electrical Transient Burst. All DI, DO, AI and Serial Ports comply with IEC1000-4-4, Level 4 Criteria A, 2 kV voltage peak 5 kHz repetition rate as per EN50155 Section 10.2.7			
Programming	IEC61131-3 (SFC, FBD, LD, ST, IL, FC) or Dynamic C from Master Controller			
Part Number	010-0245	010-0246	010-0247	010-0248